

# VCX 250

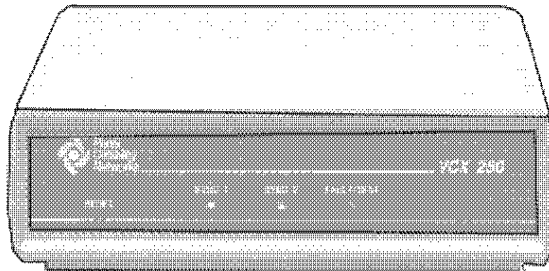
HIGH-SPEED NETWORKING MULTIPLEXER



WE MAKE NETWORKING A BREEZE

## FEATURES/BENEFITS

- Powerful connectivity for remote async offices
- Handles multiple configurations: network multiplexer, data PBX, X.25 PAD, X.21 concentrator, VCX onward linking
- Flexible wide area network support with dual WAN trunks: dial-up, leased line, X.25, X.21; trunk speeds up to 128 Kbps
- 4, 8, 16 async ports; DTE speeds up to 38.4 Kbps
- Easy to install and operate
- Local and remote management. Downloadable software



**T**he VCX 250 is a cost-effective, stand-alone multiplexer that connects local and remote async devices, such as host computers, terminals, and printers. The VCX 250 is ideally configured and priced for remote site networking and is completely compatible with all VCX models. The VCX 250 combines the dual trunk functionality of the VCX 150 and the small footprint of the VCX 100 with high-speed processing power.

## APPLICATIONS

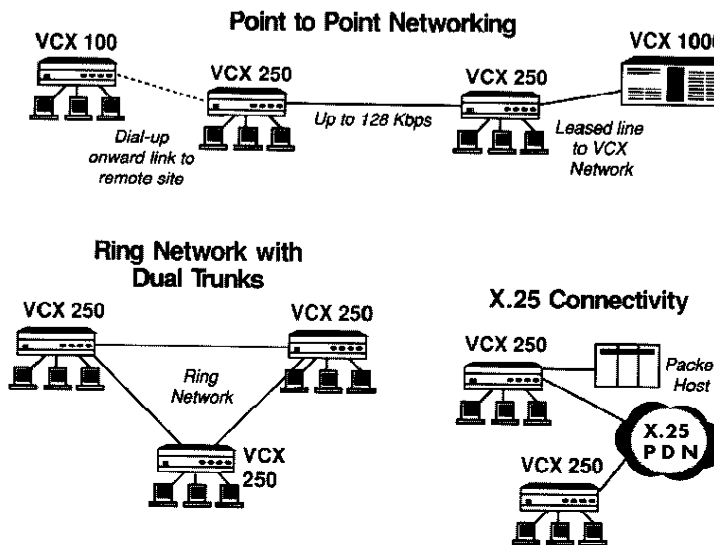
The VCX 250 can be used as a stand-alone solution for async device networking or can be used to connect remote sites in a larger VCX network. The VCX 250 is a versatile multiplexer that can be configured to support:

- Stand-alone data PBX functions
- Point-to-point networking for async devices
- Ring networks with multiple async user sites
- Onward linking for VCX networks

- X.25 PAD or host concentrator connections
- Connections to X.21/ISDN networks
- Automatic dial-up on demand links within a VCX network

## FLEXIBLE CONFIGURATION SUPPORT

Each VCX 250 is a stand-alone unit, pre-configured to support 4, 8, or 16 async ports and 1 or 2 wide area trunk ports. Each async port supports an RS232 interface and can handle DTE speeds up to 38.4 Kbps. Each WAN port connects to either dial-up or leased lines. WAN ports are available with a RS232 interface for speeds up to 19.2 Kbps or a V.35/V.11 interface for trunk rates up to 128 Kbps. Any mix of WAN interfaces is possible. WAN trunks can also support an X.25 interface for connection to X.25 packet switched services or hosts. X.21 ISDN services are supported via the connection of a terminal adapter to the VCX 250 WAN trunk. The VCX 250 is shipped pre-configured and ready for immediate installation.



## NETWORK MANAGEMENT

VCX250 units can be managed from a single terminal in the network. Units can be configured, controlled, and fault diagnosed from this remote terminal. Data connections can be monitored to solve end-user operating problems. Noteworthy network events from all nodes can be sent to a single network printer or logged in a PC.

A larger network of VCX250 nodes be managed with the Series 6000 Network Management System. The Series 6000 uses a 386 PC platform and graphical user interface to ease network configuration, management, and trouble-shooting.

## STRONG SECURITY

The VCX250 has extensive security features to safeguard network access. Logon is password protected and access to WAN trunks, dial-out modem pools, and computer resources is controlled by assigned access rights. The network can be configured to be as open or as secure as the network manager desires.

## COMPREHENSIVE PORT CONTROL

The VCX250 has extensive features that control end-user terminal ports to ease and automate terminal to terminal connections.

- All connection services are menu-driven for easy set-up
- VCX ports can be automatically connected to resources
- Users can connect to two resources and hot-toggle between them
- Both local and remote destinations can be selected from a terminal. If the port is busy, the VCX250 queues the request for automatic connection when the port is available.
- Global or port-specific directories can be displayed on the end-user terminal for ease of network navigation

## TECHNICAL SPECIFICATIONS

### Async ports

Number	4,8,16
Electrical interface	RS232/V.24 DCE async
Physical connector	RJ45
Speed	75, 110, 134.5, 150, 300, 600, 1200, 1800, 2000, 2400, 4800, 9600, 19.2K, 38.4K bps, autobaud
Aggregate input	307.2 Kbps max
Control signals	DTR, DSR, RTS, CTS, DCD

### WAN Trunks

Number	1 or 2
Interface	RS232/V.24 sync to 19.2 Kbps V.35/V.11 DTE sync to 128 Kbps
Aggregate speed	128 Kbps
Internal speed	1200, 2400, 3600, 4800, 7200, 9600, 19.2K, 38.4K, 56K, 64K, 128K

- VCX has a configurable free text feature that allows Help screens to be created by the network manager
- Automatic call forwarding is available if ports become disabled
- Any port, group, trunk, or connection path can be assigned a simple mnemonic name
- Ports can be quickly disabled with the port busy command
- An inactivity timer disconnects idle users to maximize valuable computer access.
- Broadcast messages can be sent to any set of ports, including the entire network

## WAN LINK SUPPORT

VCX250 WAN links provide both speed conversion and flow control for multiple virtual circuits. All data is buffered and each end of a virtual circuit can have unique port characteristics to match the attached device. For example, a 2400 bps terminal can dialog with a 9600 bps computer port. Also an Xon/Xoff host can internetwork with a DTR printer. A statistical multiplexing protocol is used to transmit data between VCX nodes to protect against errors. This protocol is highly efficient, transmitting data from active channels only. VCX to VCX connections use the HDLC protocol over either private or dial-up lines.

## SOFTWARE CONFIGURABLE

The VCX250 supports software downloading to ease remote node upgrades and maintenance. In addition, all port and trunk parameters and network configurations are stored in software and can be accessed by any terminal with proper access rights.

---

External speed	0-128 Kbps
Control signals	DTR, DSR, RTS, CTS, DCD
<b>General</b>	
Voltage	110 VAC (220 VAC optional) 47-63 Hz
Power	15 watts
Weight	3 lbs.
Height x Width x Depth	2.5 x 9.7 x 10.1 inches

## ORDERING INFORMATION

Model No.	Description
4100-011	VCX250 4 port desktop/110V
4100-012	VCX250 8 port desktop/110V
4100-013	VCX250 16 port desktop/110V
4104-001	VCX 8 port expander
4105-001	VCX250 V.24 trunk
4105-002	VCX250 V.11 trunk
4105-003	VCX250 V.35 trunk
4106-001	VCX250 X.25 software
4101-011	VCX250 4 port cardset
4101-012	VCX250 8 port cardset
4101-013	VCX250 16 port cardset



1300 Quince Orchard Blvd., Gaithersburg, MD 20878-4106

Call toll free (800) 473-6745 • In Maryland (301) 921-8600 • FAX (301) 921-8376

Penril DataComm LTD, Unit D2, Grafton Way, West Ham Industrial Estate, Basingstoke, Hampshire, RG22 6HY, England

Phone 011-44-256-817-199 • TLX 851-858-326 • FAX 011-44-256-817-204

Penril DataComm Asia, 7/F Wang Kee Building, 34-37 Connaught Road, Central, Hong Kong • Phone (852) 846-3100/(852) 846-3119 • FAX (852) 810-0478

All trademarks are the property of their respective owners.